

COVID-19:

Prejudice, Stigma, and Discrimination



Definitions

Prejudice: the tendency to dislike people because of their appearance or group memberships



Discrimination: negative behaviours toward others based on prejudice



Who Is Effects:

- **Asians/Chinese:** people within the Asian and/or Chinese communities
- **Healthcare workers:** those involved in fighting COVID-19

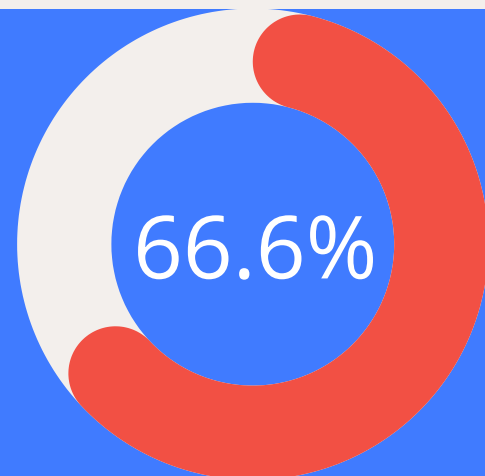
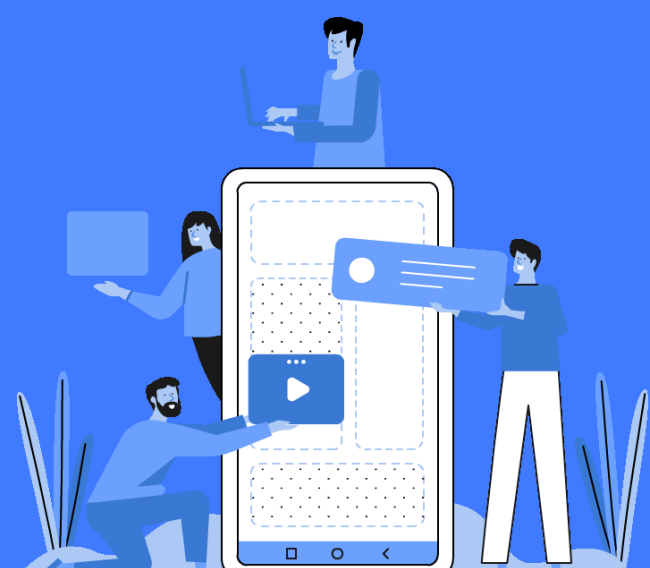


Causes of Stigma

- Xenophobia
- Misinformation
- Uninformed conclusions
- Personal beliefs
- Conspiracy theories



193,862 tweets



Number of "Chinese virus" tweets, March 9-15

Percent of people who avoid healthcare workers due to fear of contracting COVID-19